

RFID Automated Asset Tracking

Tony Wilson & Tom Copeland

Asset Management – AIR Sector

28th Sept 2020



BAE SYSTEMS

- Global defence supplier
- Established positions in **AIR**, MARITIME and LAND domains
- Growing position in cyber security
- Principal markets – US, UK, Saudi Arabia and Australia
- More than 87,800 employees in over 40 countries
- Customers in around 80 countries
- 2019 sales of £20.1bn
- £11bn+ spend with around 22,000 directly contracted suppliers globally



BAE SYSTEMS

Air 52%

- Manufacture, development, upgrade and in-service support of Typhoon combat aircraft
- Workshare partner for the design and manufacture of major sub-assemblies and systems, and provision of support for F-35 Lightning II combat aircraft
- Design, manufacture and support of electronics equipment for military & civilian aircraft
- Development of next-generation unmanned air systems and defence information systems
- Design and manufacture of missiles and missile systems through a 37.5% interest in MBDA



AIR – Asset Management

Responsible for:

Off-Site Storage
& Asset Governance:

Asset movement controls

Risk reviews & reporting

Assurance audits:

Main Production sites

Supply chain

USA & KSA



Why do we need to track our assets?

- Asset losses
- Value of assets written off as 'lost' over previous 15 years = £x m
- What's the root cause?

Logistics or Production Operatives move assets



©2020 BAE Systems.
All rights reserved

Tracking system needs 'Mandraulic' update every time an asset moves....



NOT EXPORT CONTROLLED

Something needed to
change....

BAE SYSTEMS

Automated tracking investigation, using RFID

- Over 2 yrs investigating best value for money solution & best supplier.
- **Active system:**
 - + very accurate + longer range
 - - Requires a lot of infrastructure
 - - Requires batteries in each tag changing ~ every 6 months
 - - Tags tend to be larger (to fit battery in)
 - - Expensive
- **Passive system:**
 - + much cheaper + easier to install / less infrastructure + easier/cheaper to maintain
 - - Poorer location accuracy
 - - Shorter range
- **Our solution:**
 - Passive tag system
 - Detection Gateways positioned at strategic points within buildings to maximise detection opportunities.
 - Used double tagging to increase detection rates
 - Partnered with flexible, innovative company - Codegate




Codegate®

Warton site – areas needing asset tracking

9 facilities

3 in live operation



Samlesbury site – areas needing asset tracking

9 facilities

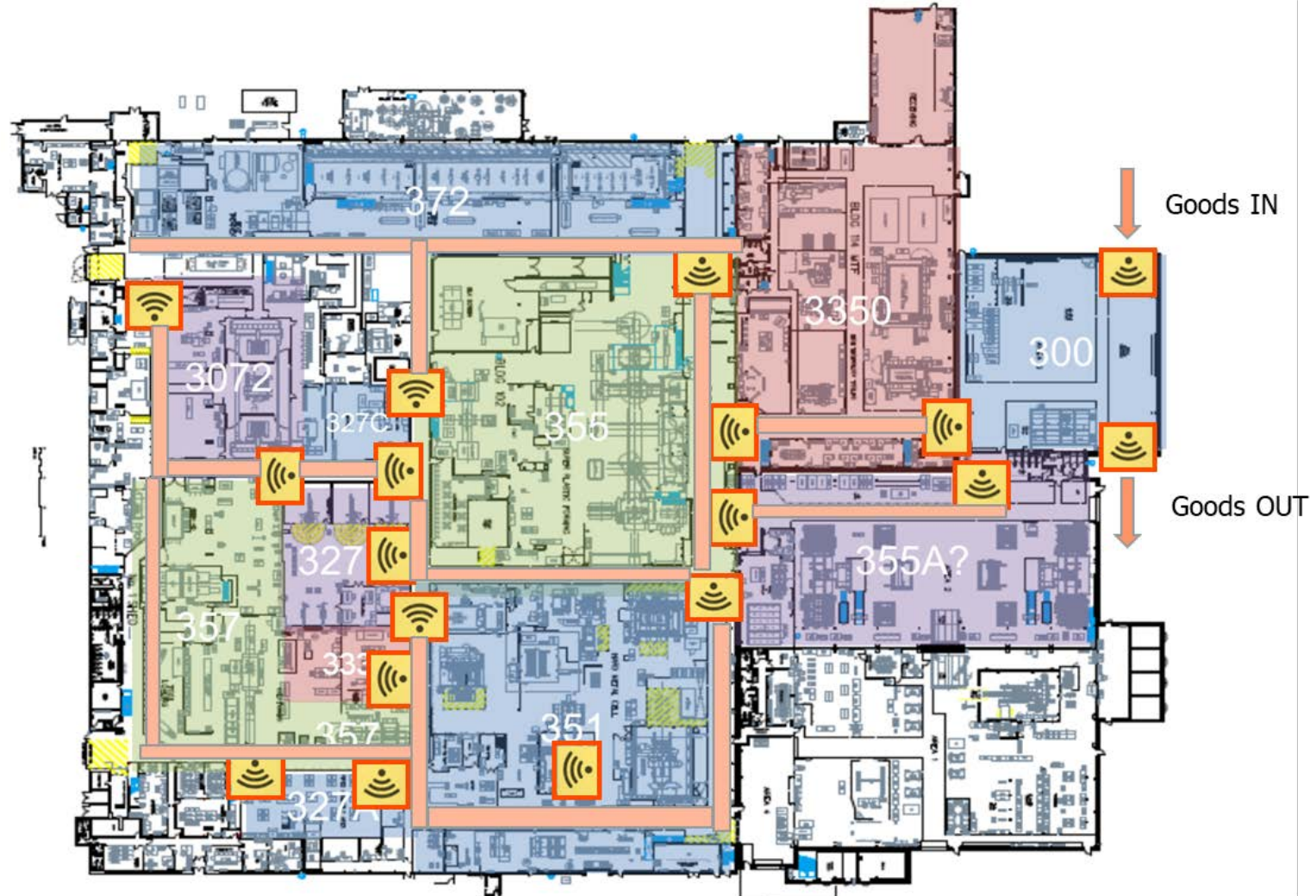
2 in live operation



Pilot project 2017



RFID Portal – “Gateway”



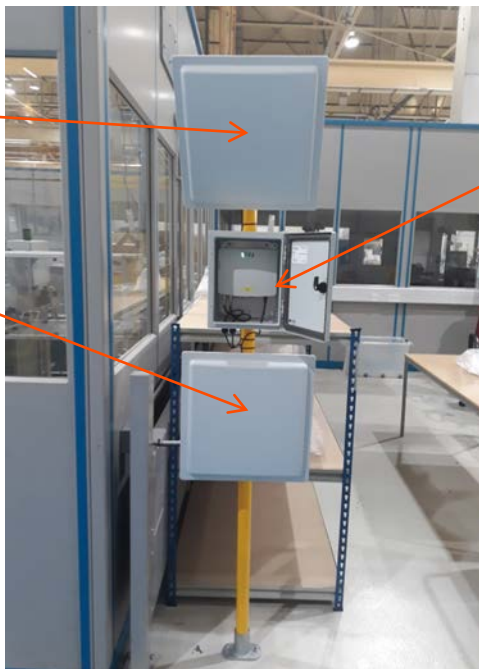
Passive RFID components

Antenna

- Different shapes / sizes
- Varying power output

Tag

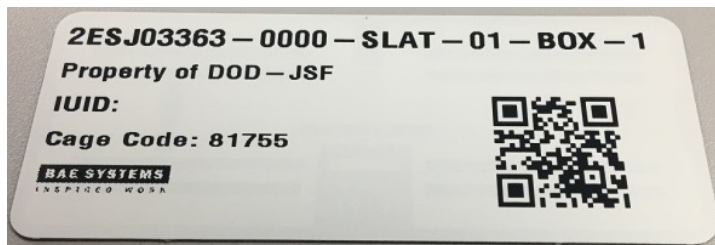
- Customisation options
- Printable
- Varying sizes
- Contains on-board antenna and chip



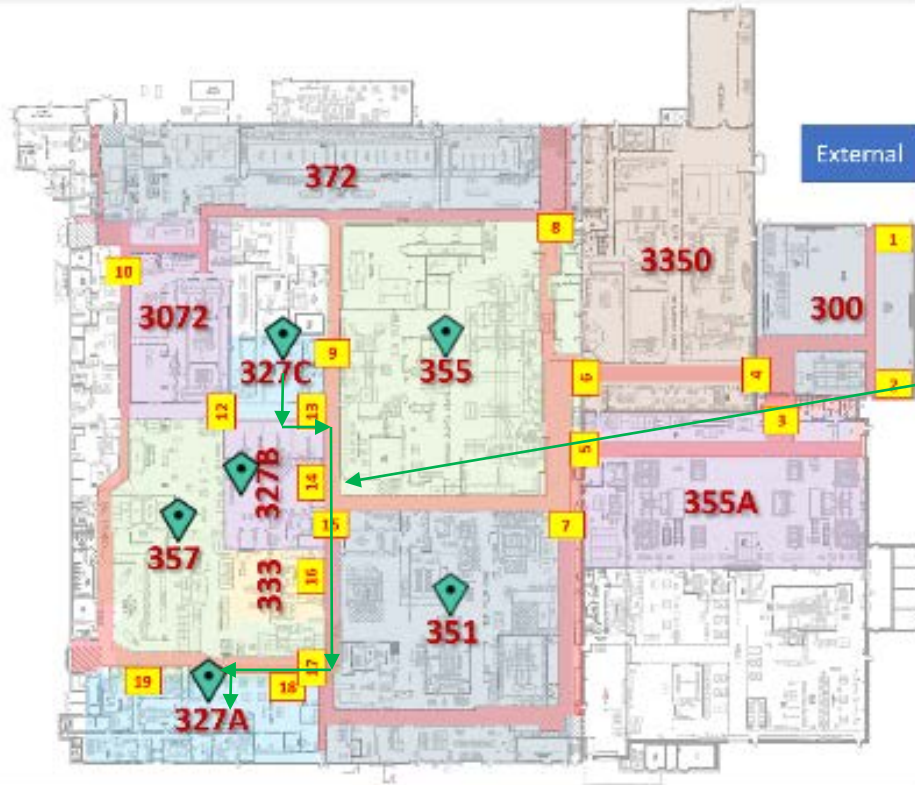
Reader

- Concealed
- Data filter / processor
- Intranet connected
- Powers up to 8 antennas

All Passive RFID equipment is governed by EPC Gen 2 Global Standard



"Lime" Middleware server/software – GUI Output



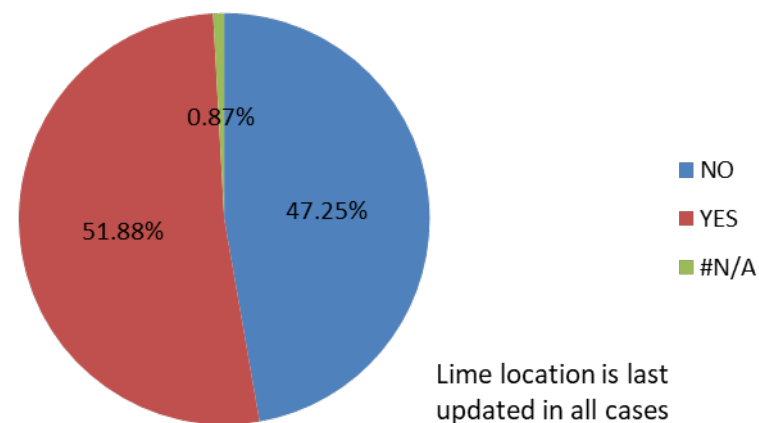
Movements for Asset 2ASJ01553-0000-WLFX-01

Pinch point	Location (deduced)	Date and Time
N/A	327A	05/09/2017 10:53:49
TTP19	357	04/09/2017 15:55:24
TTP18	327A	04/09/2017 15:55:14
TTP17	357	04/09/2017 15:55:10
TTP15	351	04/09/2017 15:54:58
TTP14	327B	04/09/2017 15:54:50
TTP13	355	04/09/2017 15:54:37
N/A	327C	04/09/2017 15:30:08
TTP13	327C	11/08/2017 11:38:24
TTP14	327B	08/08/2017 10:16:12

Timescale of
15:54 to 15:55

Pilot project findings

- 18 Portals installed at pinch points in the facility – 2m read range.
- 650 assets tagged and in circulation
- Success was planned at > 75% detection rates
 - After tweaks the capture rate is now > 97%
- RFIId v conventional “mandraulic” system compared after 3 months
- 47% of asset locations were more accurate with RFIId
- **Other improvements:**
 - Full stock check of the building
 - Old method = 1 week
 - RFIId = 4 hours with handheld reader
 - Audit preparation time reduced from 3 days to 3 minutes



Improvements / market shifts since 2017

- **Electronic beam scanning introduced**
 - narrow beams = greater distance – **up to 20m**
 - additional signal detection/amplification techniques = greater distance
 - Found through Codegate & RFID Live 2018!
- **Improved passive tags**, via Codegate
- **Flexible development of Middleware**: Lime (built by Codegate)
 - Codegate very responsive to feedback
 - Able to improve and grow their product quickly

Issues encountered

- Tags:
 - On Metal detection range <5cm, looked at “on metal” tags
 - **Innovated** – 6mm Foam pad, 10cm long with 3M adhesive on back = **1m detection range**
 - Can’t always stick a tag to an asset – chemicals / heat
- Roof mounted RF Controls antennae:
 - Detection issue: Overhead cranes in beam path
 - Installation issue: dust on beams above aircraft manufacture
 - **Innovated**: mount on perimeter walls 4m+ high looking diagonally downwards, forming a “detection curtain”
 - Use of beam calculations to position antennae tilt at optimum
- POE+ Cat 6 Ethernet cable lengths
 - **Above 75m causing problems**
 - Currently looking at:
 - POE + injectors
 - Additional Switch/Cabinet units (but costly)
- Covid-19

Summary

- AIR Sector business case authorised from the success of the Pilot
 - Rollout now commenced:
 - 4 of 18 facilities are now live
 - Majority of infrastructure now in place:
 - A mix of Portals and RF Controls antennae used to optimise the system
 - Tagging methods are being improved
 - Final testing and integration due early 2021
- Improvements:
 - Could use Wi-Fi if the buildings have it pre-installed.
 - Passive systems are improving – electronic beam forming / receiver units
 - Hybrid tags – powered by 3g mobile signals / WiFi / vibration

Plans for the future

- Complete the 18 facility roll-out (by end 2021)
- Roll-out to a further 3 facilities
- Continue to investigate tagging in different ways to accommodate the full range of assets
- Integrate Lime into our factory asset location system
- Stock Checking using a robot at night to “patrol” the facility or
- Stock Checking larger areas using a drone, fitted with RFID detection system
- RFId Live 2021/2022? will be used to investigate additional benefits/add-ons

Questions

QUESTIONS ???